

5mm Silicon PIN Photodiode,T-1 3/4 PD5443-3B/L2



Features

- Fast response times
- High photo sensitivity
- Small junction capacitance
- Pb free
- The product itself will remain within RoHS compliant version.
- Compliance with EU REACH
- Compliance Halogen Free .(Br <900 ppm ,Cl <900 ppm , Br+Cl < 1500 ppm)

Description

PD5443-3B/L2 is a high speed and high sensitive PIN photodiode in a standard 5Φ plastic package. Due to its black epoxy the device is sensitive to visible and infrared radiation

Applications

- High speed photo detector
- Security system
- Camera

Device Selection Guide

Chip Materials	Lens Color
Silicon	Black

Absolute Maximum Ratings (Ta=25°C)

Parameter	Symbol	Rating	Unit
Reverse Voltage	V _R	32	mA
Power Dissipation	P _d	150	mW
Soldering Temperature(*2)	T _{sol}	260	°C
Operating Temperature	T _{opr}	-40 ~ +85	°C
Storage Temperature	T _{stg}	-40 ~ +100	°C

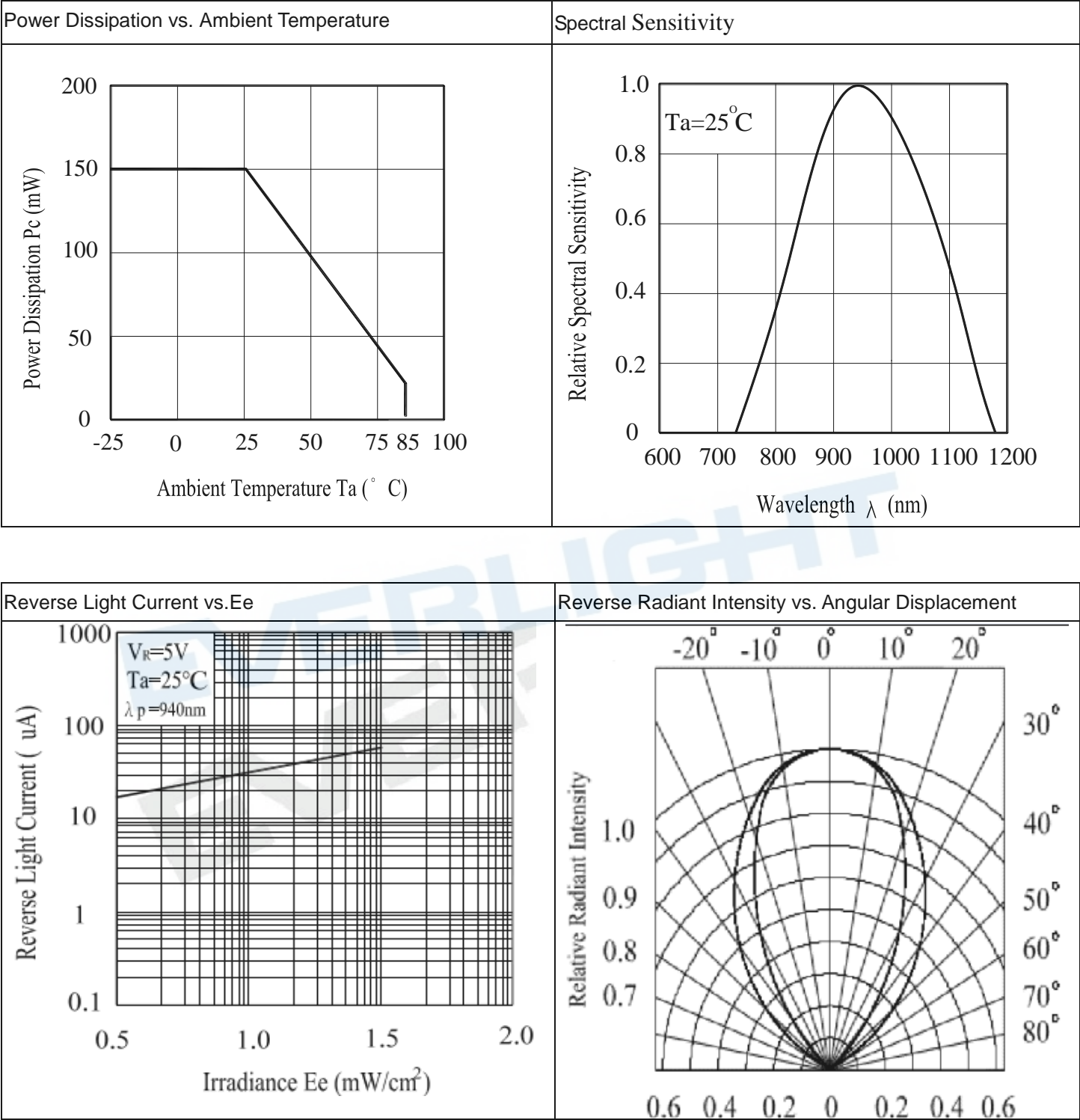
Notes: *1: Soldering time \leq 5 seconds.

:

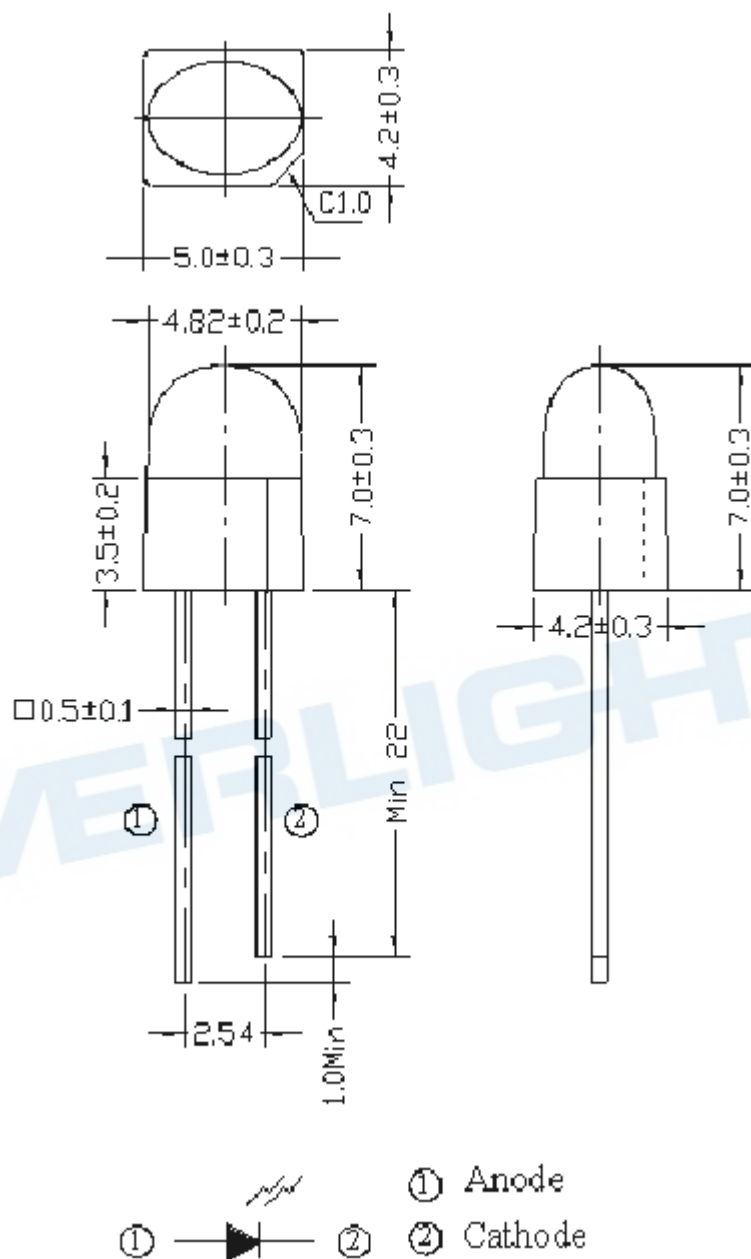
Electro-Optical Characteristics (Ta=25°C)

Parameter	Symbol	Min.	Typ.	Max.	Unit	Condition
Rang of Spectral Bandwidth	$\lambda_{0.5}$	840	-----	1100	nm	-----
Wavelength of Peak Sensitivity	λ_p	-----	940	-----	nm	-----
Open-Circuit Voltage	VOC	-----	0.39	-----	V	Ee=5m W/cm2 $\lambda_p=940\text{nm}$
Short- Circuit Current	ISC	-----	34	-----	uA	Ee=1m W/cm2 $\lambda_p=940\text{nm}$
Reverse Light Current	I_L	25	39	-----	uA	Ee=1m W/cm2 $\lambda_p=940\text{nm}$ VR=5V
Reverse Dark Current	I_D	-----	2	30	nA	Ee=0m W/cm2 VR=10V
Reverse Breakdown Voltage	V_{BR}	32	170	-----	V	Ee=0m W/cm2 IR=100 uA
Total Capacitance	C_t	-----	18	-----	pF	Ee=0m W/cm2 VR=5V F=1MHZ
Rise Time/Fall Time	tr/ta	-----	45/45	-----	nS	VR=10V RL=1KΩ
View Angle	2θ 1/2	X	80	-----	deg	VR=5V
		Y	60	-----		

Typical Electro-Optical Characteristics Curves



Package Dimension



Note: Tolerances unless dimensions $\pm 0.25 \text{ mm}$

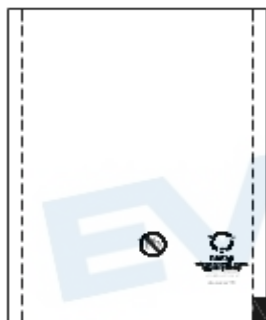
Label Form Specification

RoHS	Pb	EVERLIGHT	5
CPN: XXXXXXXXXXXXXXXXXXXX			
XXXXXXXXXX-XXXXXXXXXX-XXXXXXXXXX-XXXXXXXX-XXXXXX			
P/N: XXXXXXXXXXXX			
XXXXXXXXXX-XXXXXXXXXX-XXXXXXXXXX-XXXXXXXX-XXXXXX			
LOT No: Y150716XXX-XXXXXXXXXX-XXXXXXX			
QTY: 0123456789 HUE: XXXXXXXXXXXX			
CAT: XXXXXXXXXXXX REF: XXXXXXXXXXXX			
REFERENCE: BTPYYMMDDXXXXX			
MADE IN XXXXXX			

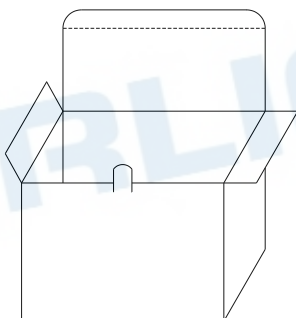
- CPN: Customer's Product Number
- P/N: Product Number
- QTY: Packing Quantity
- CAT: Luminous Intensity Rank
- HUE: Dom. Wavelength Rank
- REF: Forward Voltage Rank
- LOT No: Lot Number
- X: Month
- Reference: Identify Label Number

Packing Specification

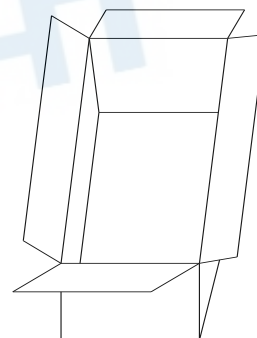
■ Anti-electrostatic bag



■ Inner Carton



■ Outside Carton



Packing Quantity Specification

1.200-500 PCS/1Bag , 6Bags/1 Ineer Carton

2.10 Ineer Cartons /1 Outside Carton

Notes

1. Lead Forming

- During lead formation, the leads should be bent at a point at least 3mm from the base of the epoxy bulb.
- Lead forming should be done before soldering.
- Avoid stressing the photodiode package during leads forming. The stress to the base may damage the photodiode's characteristics or it may break the photodiodes.
- Cut the photodiode lead frames at room temperature. Cutting the lead frames at high temperatures may cause failure of the photodiodes.
- When mounting the photodiodes onto a PCB, the PCB holes must be aligned exactly with the lead position of the photodiode. If the photodiodes are mounted with stress at the leads, it causes deterioration of the epoxy resin and this will degrade the photodiodes.

2. Storage

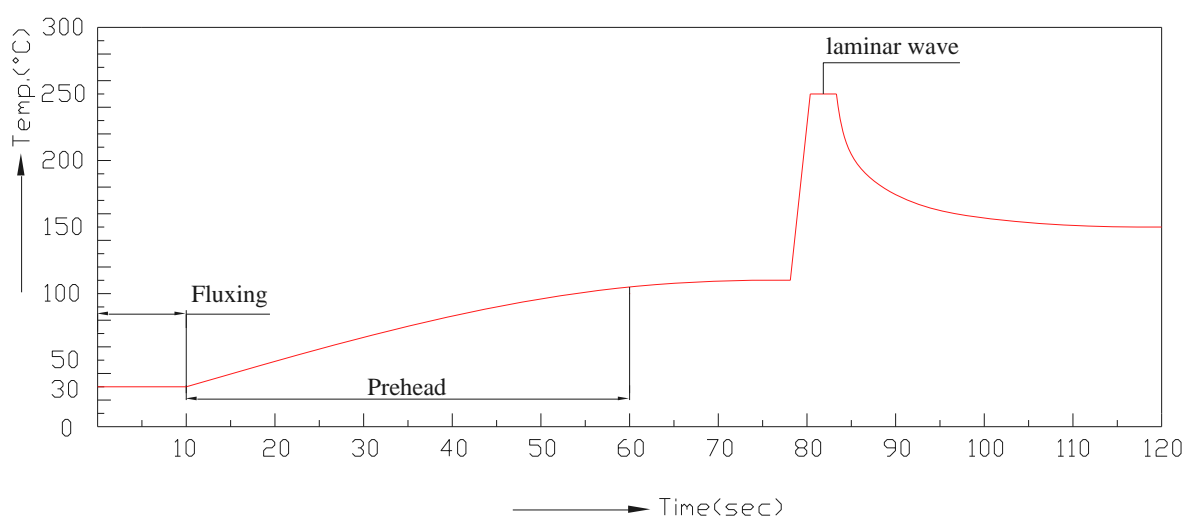
- The photodiodes should be stored at 30°C or less and 70%RH or less after being shipped from Everlight and the storage life limits are 3 months. If the photodiodes are stored for 3 months or more, they can be stored for a year in a sealed container with a nitrogen atmosphere and moisture absorbent material. After opening the photodiodes should be used up within 24 hour
- Please avoid rapid transitions in ambient temperature, especially, in high humidity environments where condensation can occur.

3. Soldering

- Careful attention should be paid during soldering. When soldering, leave more than 3mm from solder joint to epoxy bulb, and soldering beyond the base of the tie bar is recommended.
- Recommended soldering conditions:

Hand Soldering		DIP Soldering	
Temp. at tip of iron	300°C Max. (30W Max.)	Preheat temp.	100°C Max. (60 sec Max.)
Soldering time	3 sec Max.	Bath temp. & time	260 Max., 5 sec Max
Distance	3mm Min. (From solder joint to epoxy bulb)	Distance	3mm Min. (From solder joint to epoxy bulb)

- Recommended soldering profile



- Avoiding applying any stress to the lead frame while the photodiodes are at high temperature particularly when soldering.
- Dip and hand soldering should not be done more than one time
- After soldering the photodiodes, the epoxy bulb should be protected from mechanical shock or vibration until the

photodiodes return to room temperature.

- A rapid-rate process is not recommended for cooling the photodiodes down from the peak temperature.

Although the recommended soldering conditions are specified in the above table, dip or hand soldering at the lowest possible temperature is desirable for the photodiodes.

- Wave soldering parameter must be set and maintain according to recommended temperature and dwell time in the solder wave.

4. Cleaning

- When necessary, cleaning should occur only with isopropyl alcohol at room temperature for a duration of no more than one minute. Dry at room temperature before use.
- Do not clean the photodiodes by the ultrasonic. When it is absolutely necessary, the influence of ultrasonic cleaning on the photodiodes depends on factors such as ultrasonic power and the assembled condition. Ultrasonic cleaning shall be pre-qualified to ensure this will not cause damage to the photodiode

5. Heat Management

- Heat management of photodiodes must be taken into consideration during the design stage of photodiode application. The current should be de-rated appropriately by referring to the de-rating curve found in each product specification.
- The temperature surrounding the photodiode in the application should be controlled. Please refer to the data sheet de-rating curve.

6. ESD (Electrostatic Discharge)

- Electrostatic discharge (ESD) or surge current (EOS) can damage photodiodes.
- An ESD wrist strap, ESD shoe strap or antistatic gloves must be worn whenever handling photodiodes.
- All devices, equipment and machinery must be properly grounded.
- Use ion blower to neutralize the static charge which might have built up on surface of the photodiodes plastic lens as a result of friction between photodiodes during storage and handing.

DISCLAIMER

1. EVERLIGHT reserves the right(s) on the adjustment of product material mix for the specification.
2. The product meets EVERLIGHT published specification for a period of twelve (12) months from date of shipment.
3. The graphs shown in this datasheet are representing typical data only and do not show guaranteed values.
4. When using this product, please observe the absolute maximum ratings and the instructions for using outlined in these specification sheets. EVERLIGHT assumes no responsibility for any damage resulting from the use of the product which does not comply with the absolute maximum ratings and the instructions included in these specification sheets.
5. These specification sheets include materials protected under copyright of EVERLIGHT. Reproduction in any form is prohibited without obtaining EVERLIGHT's prior consent.
6. This product is not intended to be used for military, aircraft, automotive, medical, life sustaining or life saving applications or any other application which can result in human injury or death. Please contact authorized Everlight sales agent for special application request.